

Kingsley CP Knowledge Organiser

Science Focus

Seasonal Changes

Year 1

Autumn 2 Term

What? (Key knowledge)

Observe changes across the 4 seasons

| | |
|--------|---|
| Autumn | Leaves on deciduous trees change colour and begin to fall to the ground. Pine cones, conkers and conker husks can be found on the floor. |
| Winter | Many trees have lost all of their leaves and their branches are bare. Some animals hibernate, migrate or adapt to avoid the cold weather. |
| Spring | Leaves begin to appear and some trees begin to blossom. Plants start to grow and flowers start to come out. Lambs are born and chicks begin to hatch. |
| Summer | Trees are full of leaves and grow lots. Shadows are easy to see when an object blocks out the sun's light. |

Observe & describe weather associated with the seasons

| | |
|--------|---|
| Autumn | Temperature begins to fall. It gets windier and the rainfall increases. People wear coats and carry umbrellas. |
| Winter | Temperature gets even colder. It can freeze and we start to notice frost and ice. There can be snowfall. People wear woolly hats, gloves and scarves. |
| Spring | Temperature begins to rise. People stop wearing coats when going outside. |
| Summer | Temperature continues to rise and get even hotter. People wear shorts, t-shirts, sun hats, sunglasses and sun cream. |

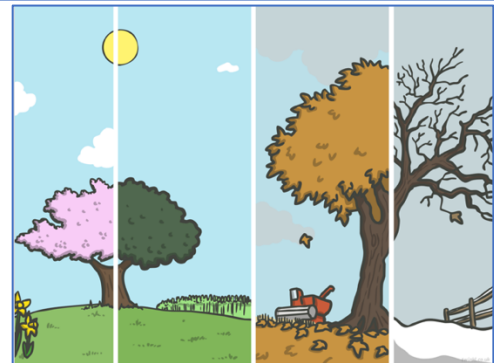
Observe variation in day length

| | |
|--------|---|
| Autumn | The days begin to get shorter and the nights begin to get longer |
| Winter | Winter has the shortest days and the longest nights of all the seasons. |
| Spring | The days begin to get longer and the nights begin to get shorter. |
| Summer | Summer has the longest days and the shortest nights of all the seasons. |

What? (Key Vocabulary)

| | |
|-------------|--|
| Temperature | How hot or cold it is. |
| Sunshine | How sunny it is. |
| Rainfall | How much rain there is. |
| Weather | What's happening to the sky and air outside. |
| Hibernate | When animals have long periods of deep sleep during cold weather. |
| Migrate | When birds move to a warmer climate and back again to avoid the cold winter. |

Diagrams



Possible Experiences

- Exploring seasonal changes outside in 'Nature's Nook'.
- Investigating and measuring temperature, rainfall, wind force / direction and length of daylight.
- Making a weather vane.